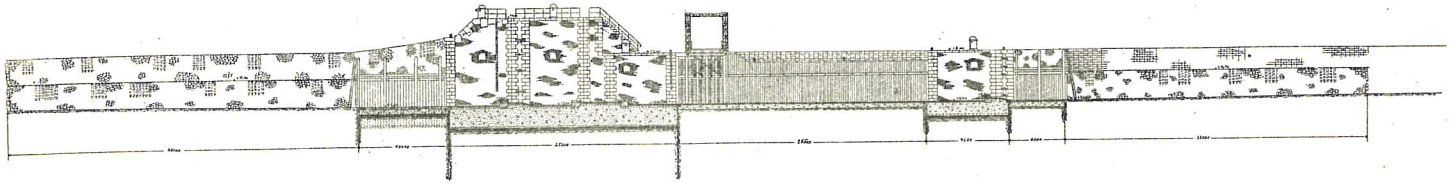
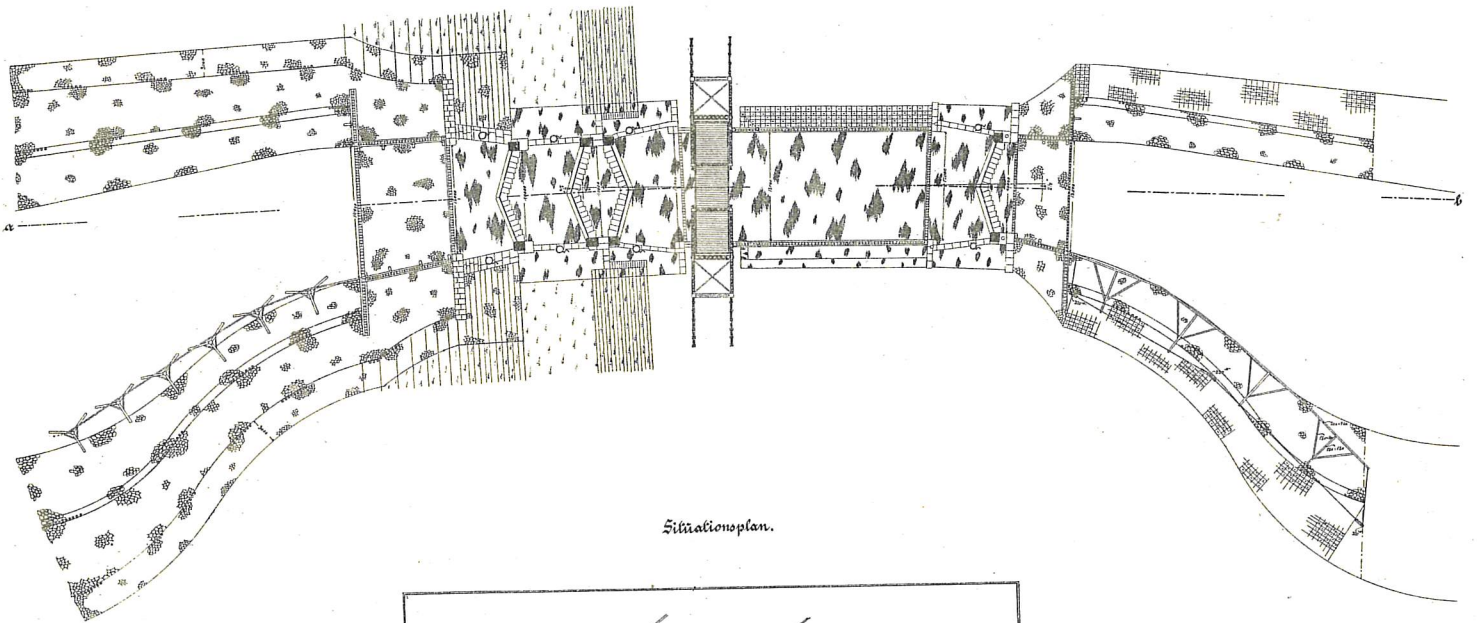


Digeanlaget for Marsken ved Ribe.
Kammersluse for Ribe Kanal.

Snit: a-b.

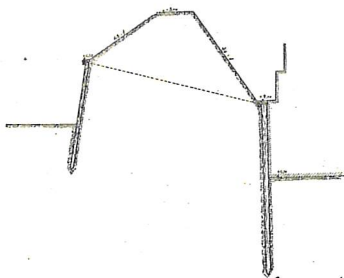


Plan.

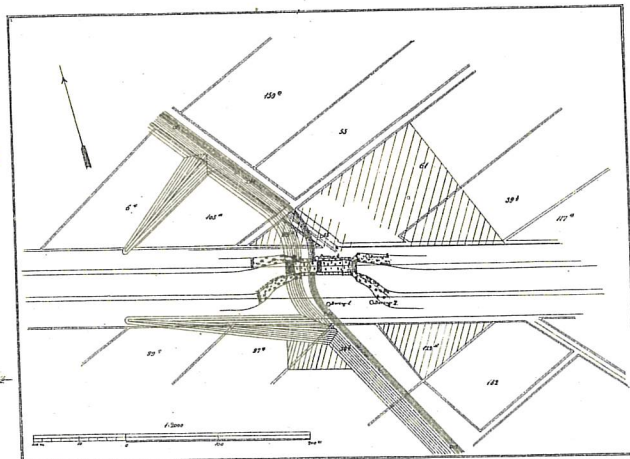
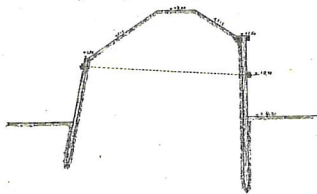


Situationsplan.

Træsnit af Bangedæmning om Houbæne.

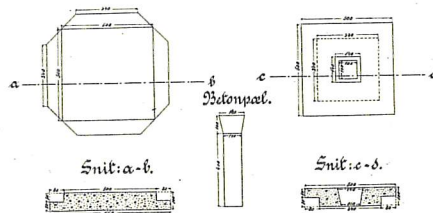
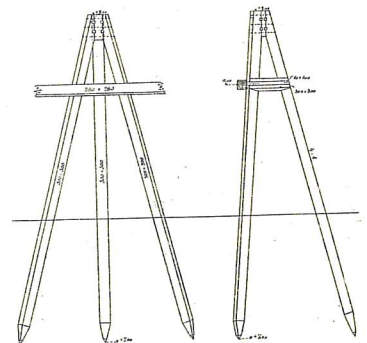


Træsnit af Bangedæmning om Kammeret.



Detonplan.

Disse d'Alte.



Sammenlægning af Stævene.



Ribøig i April 1911.
E. Thomsen.